

Cutaneous Lymphoid Lesions

Cutaneous lymphoid lesions are frequently encountered in skin biopsies. Differentiating between various benign and malignant entities is critical, as is a precise classification of cutaneous lymphoid infiltrate remains a vexing problem for clinicians and pathologists.

Genomic Testing Cooperative's comprehensive testing can resolve this clinical and diagnostic problem.

GTC's Hematology Profile Plus Provides

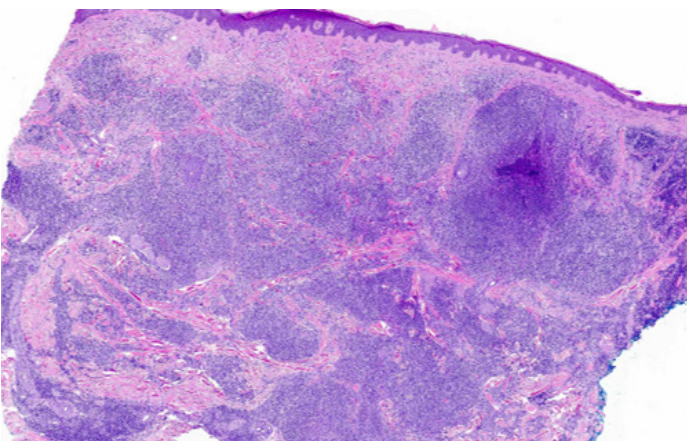
Comprehensive and sensitive profile of mutations distinguishing between benign and malignant process

Comprehensive clonality evaluation of B- and T-cell clonality including heavy and light chains for B-cells, alpha, beta, gamma, and delta T-cell receptors with defining the expressed gene family so multiple lesions can be compared

Complete immunophenotyping profiling of the lymphoid cells (CD19, CD20, CD22, CD3, CD4, CD8, CD5, CD7, CD30, ...)

Presence or absence of EBV and HPV viruses

Complete chromosomal gain or loss and translocations



Don't accept partial results!

Order Hematology Profile Plus on skin biopsies and resolve the diagnostic dilemma of cutaneous lymphoid lesions.

Send samples via FFPE block or unstained slides (5 to 7 plus H&E) and follow the instructions on our website.



Cancer Hope
אונקולוגיה מותאמת אישית

לתיאום בדיקה: 03-919-57-57

ווצאפ: 054-468-7377

ד"ר: info@CancerHope.co.il